

WEBINAR: REVISION OF THE FSC FOREST STEWARDSHIP STANDARD FOR AUSTRALIA

Stefan Jensen

Senior Policy Manager, FSC ANZ

29 August and 1 September 2025



Acknowledgement of Country

FSC Australia and New Zealand recognises the First Nations Peoples of Australia as the first stewards of Australia's forests, landscape, and waterways. We honour their continuous and ingrained connection to Country. We acknowledge the continuous living cultures of Australia's First Nations Peoples and value their important contributions to Australian society, past present and into the future. We celebrate the cultural diversity of Australia's First Nations Peoples and pay deep respect to Elders past and present.

How to participate

Submit your Questions using the Q&A button - anonymously please!

Ask your **questions** in the **Q&A box** so that we can keep an overview and easily manage them

Please kindly keep the chat box for **comments and discussion**

You can like (👍) a question submitted by other participants - the more likes a question receives, the greater the priority it will become to answer.

What to expect today

The webinar will share:

- background information about the revision process,
- details about the proposed changes to the existing standard, and
- inspiration to underpin your feedback to the draft Standard on the FSC Consultation Platform

Today's session is public and open to all stakeholders



AGENDA



Topic	Time	Presenter
1 Welcome and introduction	5 min.	Stefan
2 About FSC and the revision process	10 min.	Stefan
3 Scope of the revision	5 min.	Stefan
4 Proposed changes	35 min.	Stefan
5 The process going forward	5 min.	Stefan
6 Q&A	30 min.	Stefan and SDG



About FSC and the revision process



Socially fair.

ABOUT FSC



A voluntary, market-driven certification scheme



~1.17 mha of forest certified in Australia across 11 organisations.



A unique multi-stakeholder governance model where members are divided into **economic**, **environmental** and **social chambers** that come together to decide the future of responsible forestry, internationally and locally



Representation in Australia since 2006

POLL

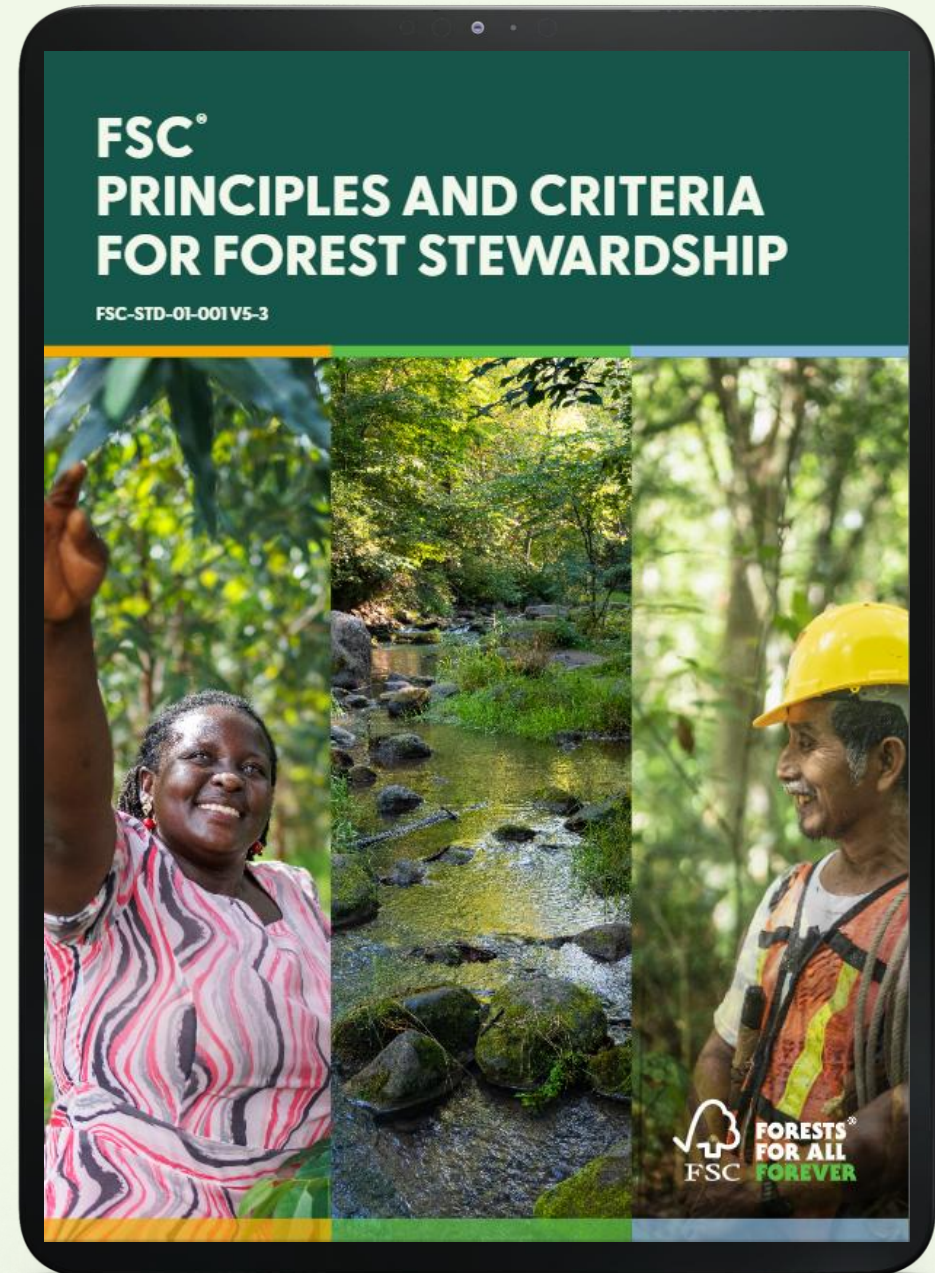
**Have you ever looked through
an FSC Forest Stewardship
Standard?**

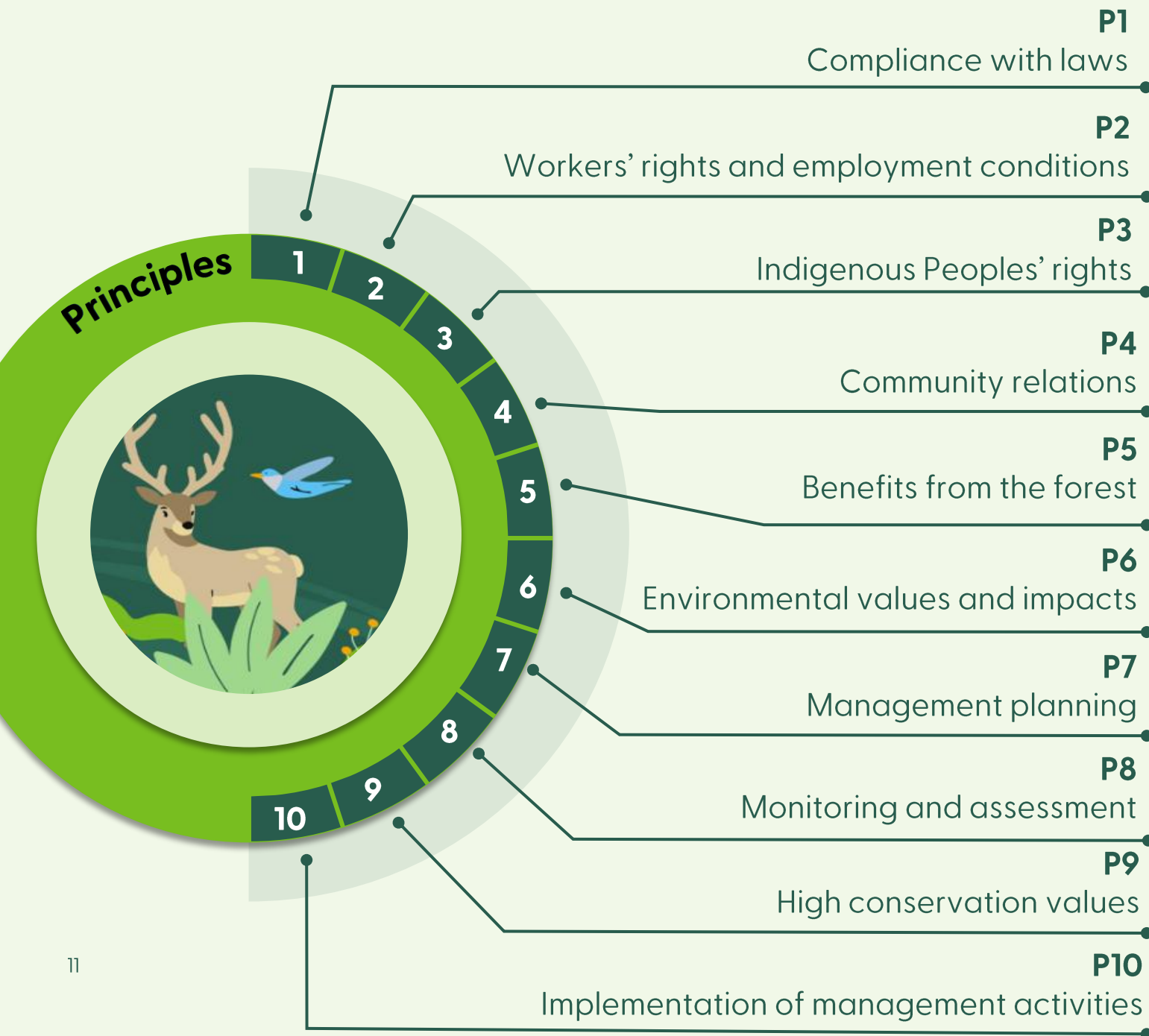
Yes: 👍

No: 😞

FSC's Principles and Criteria

- ♥ The Principles and Criteria (P&C) is the core standard for FSC Forest Management Certification
- ♥ The P&C define a global benchmark for good Forest Stewardship
- ♥ 10 Principles and ~70 Criteria





FSC'S TEN PRINCIPLES

FSC International Generic Indicators (IGIs)



Operationalise the FSC Principles and Criteria Version 5-3 at the national level



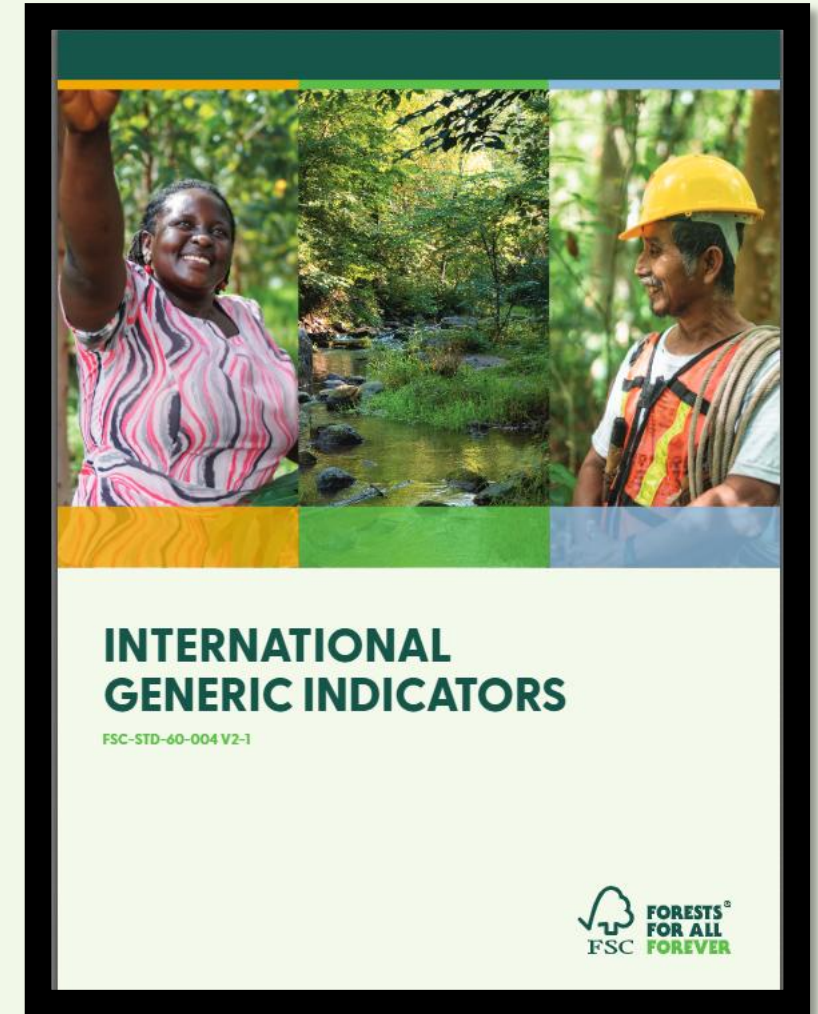
Ensure the consistent implementation of the Principle and Criteria across the world



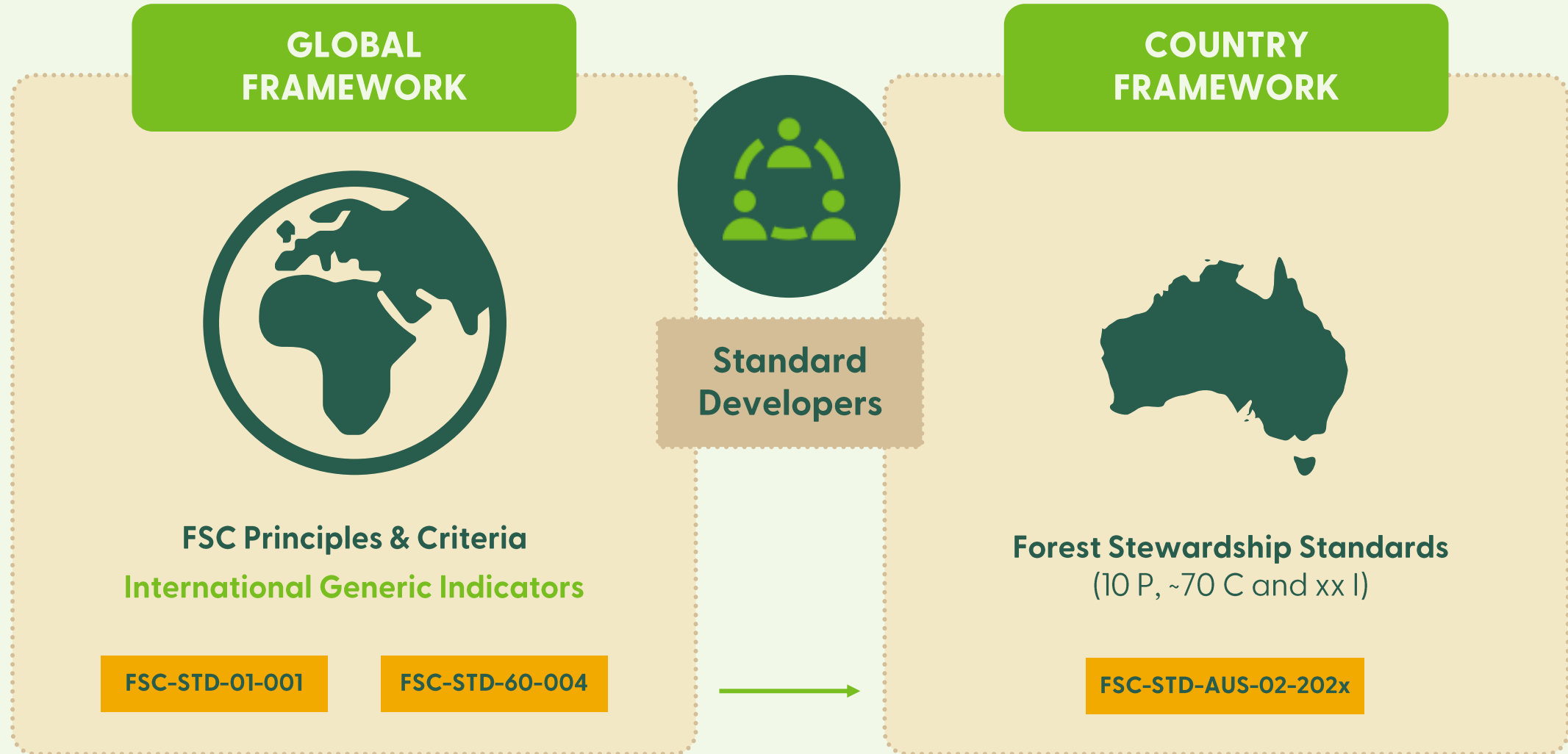
Improve and strengthen the credibility of the FSC system



Improve the consistency and quality of Forest Stewardship Standards



The role of FSC's Principles & Criteria and International Generic Indicators



Members of the Standards Development Group (SDG)

Economic chamber

Carl Richardson, Australian Bluegum Plantations

Judy Alexander, Foresa Consulting (previously Tim McBride, HVP)

VACANCY (previously Simon Cook, Forico)

Environmental chamber

Grant Wardell-Johnson, individual member

Patrick Gardner, The Wilderness Society

Sean Cadman, individual member

Social chamber

Mark Brown, Forestry Australia

Tolita Davis-Angeles, individual member

VACANCY (previously Lorraine Cassin, AMWU)

Chair and facilitator: Stefan Jensen

Local adaptation

PRINCIPLE

PRINCIPLE 2: WORKERS'* RIGHTS AND EMPLOYMENT CONDITIONS

The *Organisation** shall* maintain or enhance the social and economic wellbeing of *workers**.

CRITERION

CRITERION 2.2

The *Organisation** shall* promote *gender equality** in employment practices, training opportunities, awarding of contracts, processes of *engagement** and management activities.

IGI

IGI 2.2.4

Women and men are paid the same wage when they do the same work.

Adopt

Adapt

Drop

Add new

Local adaptation

PRINCIPLE	CRITERION	IGI	2018 FSS INDICATOR
<p>PRINCIPLE 2: WORKERS’* RIGHTS AND EMPLOYMENT CONDITIONS</p> <p>The <i>Organisation*</i> shall* maintain or enhance the social and economic wellbeing of <i>workers*</i>.</p>	<p>CRITERION 2.2</p> <p>The <i>Organisation*</i> shall* promote <i>gender equality*</i> in employment practices, training opportunities, awarding of contracts, processes of <i>engagement*</i> and management activities.</p>	<p>IGI 2.2.4</p> <p>Women and men are paid the same wage when they do the same work.</p>	<p>INDICATOR 2.2.4</p> <p>Women and men of the same qualifications, skill and experience are paid the same wage when they do the same work.</p>
<div>Adopt</div> <div>Drop</div>		<div>Adapt</div> <div>Add new</div>	

Local adaptation



IGI

IGI 2.2.2

Women and men of the same qualifications, skill and experience are paid the same wage when they do the same work.



2018 NFSS Indicator

INDICATOR 2.2.2

Women and men of the same qualifications, skill and experience are paid the same wage when they do the same work.



202x Draft FSS Indicator

INDICATOR 2.2.2

Workers* are paid equally for work that is of equal skill and responsibility.

Adapt

POLL

Have you looked at the draft standard and the associated annexes and guidance yet?

Yes: 👍

No: 😬

Q & A



Scope of the revision

The three parts of the review

FSC-STD-60-006 (V1-2)
clause 12.3:

“A review report of **all the comments on the standard**; **changes to associated elements of the FSC system**; as well as **external circumstances and the continued relevance of the standard** shall be compiled within three (3) years of the standard’s approval.”

1 Standard users’ and members’ feedback

2 Changes to associated elements of the FSC system

3 External circumstances and the continued relevance

The scope of the revision

STANDARD USERS' AND MEMBERS' FEEDBACK

Standard users, the FSC ANZ Board and membership identified essential updates required to ensure the continued relevance of the standard, including the inclusion of NTFPs in the scope of the standard and addressing issues related to P2.

CHANGES TO ASSOCIATED ELEMENTS OF THE FSC SYSTEM

Changes introduced to FSC-STD-01-001 V5-3 *FSC Principles and Criteria for Forest Stewardship* and FSC-STD-60-004 V2-1 *EN International Generic Indicators*.

EXTERNAL CIRCUMSTANCES AND CONTINUED RELEVANCE

An evaluation of how climate change and bushfire adaptation and mitigation strategies, including post-catastrophic disturbance management options can be supported by the existing framework of the Standard.



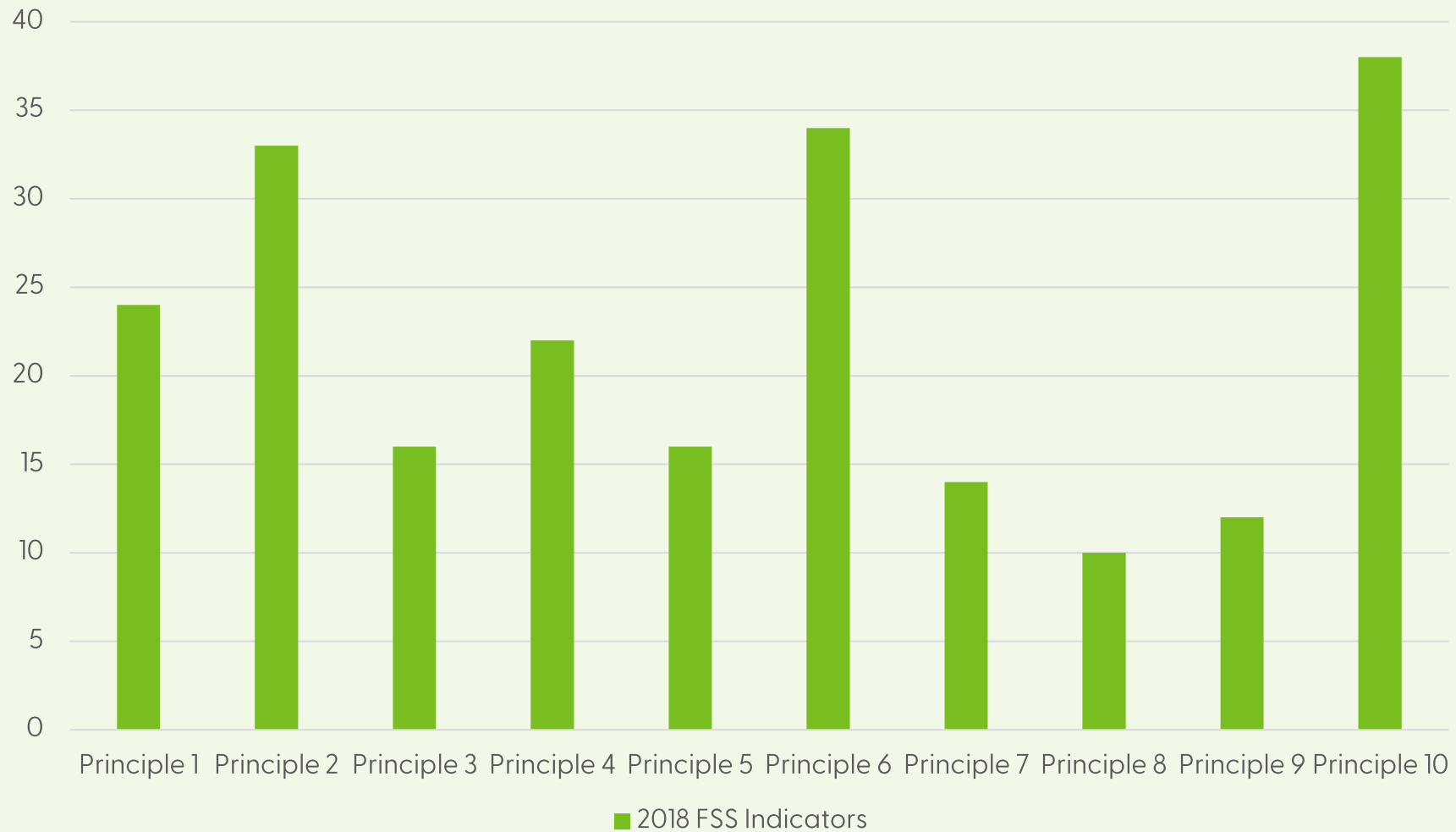
Proposed changes

Quiz

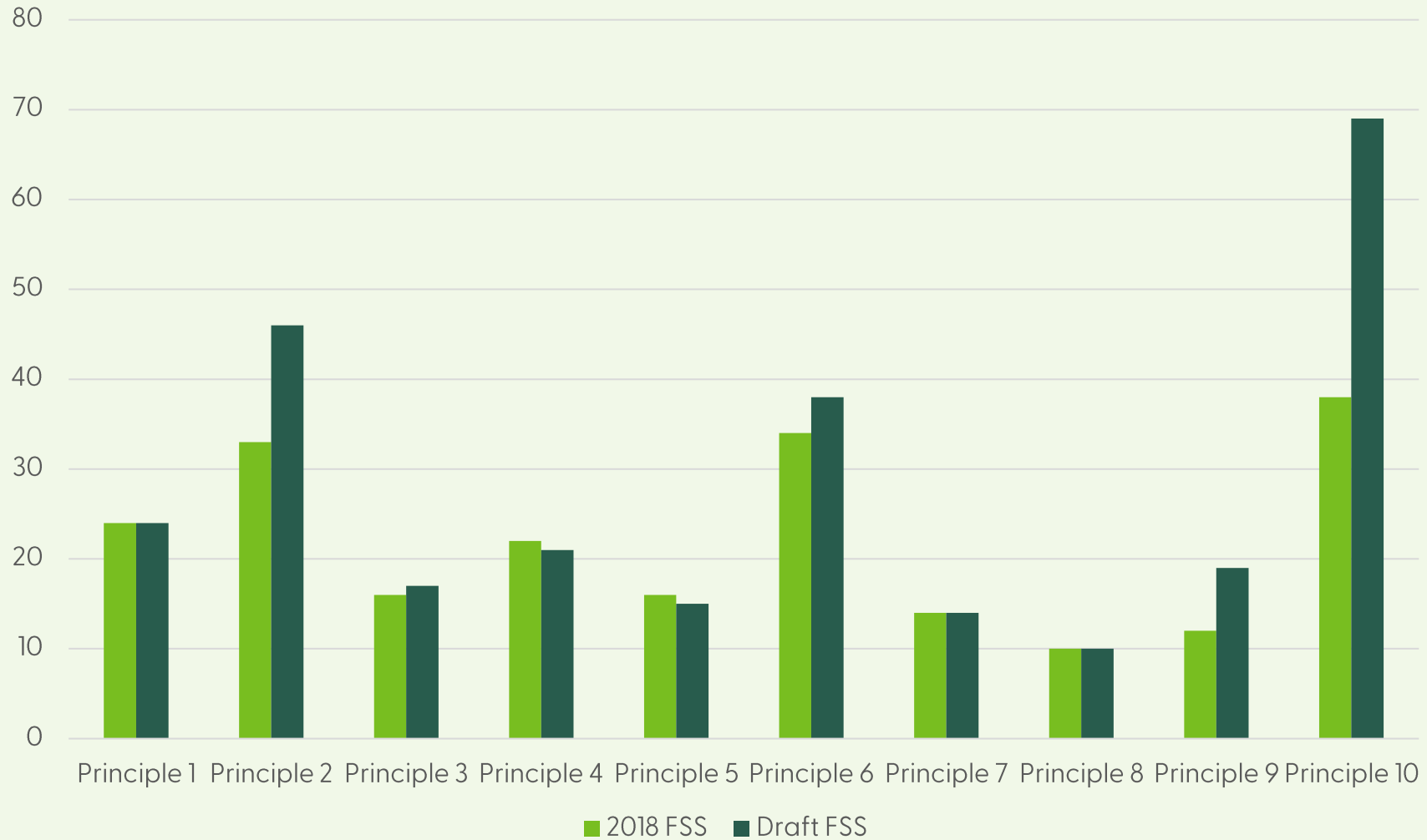
**Which Principle in the 2018 FSS
for Australia has the most
Indicators?**

**Provide your answer in the
chat.**

2018 FSS Indicators



2018 and draft FSS Indicators



WHAT'S CHANGED?

Criterion	2018 FSS Indicators	Draft FSS Indicators	New Indicators	Revised Indicators	Dropped Indicators	Annexes	Guidance
1 Compliance with laws	24	24	0	1	0	1 (revised)	0
2 Workers' rights and employment conditions	33	46	17	2	3	1 (adopted)	1 (new)
3 Indigenous Peoples' rights	16	17	1	3	0	0	0 (1 may be developed)
4 Community relations	22	21	1	0	2	0	1 (no change)
5 Benefits from the forest	16	15	2	1	3	0 (Annex C dropped)	0
6 Environmental values and impacts	34	38	4 (+ 1 new Criterion)*	3	0	0	1 (no change)
7 Management planning	14	14	0	2	0	1 (revised)	0
8 Monitoring and assessment	10	10	0	4	0	0 (Annex F dropped)	0
9 High conservation values	12	19	7	0	0	2 (1 revised and 1 new)	0
10 Implementation of management activities	38	69	31 (including 25 new HHP Indicators)	2	2	1 (new - 10 HHP templates and guiding ESRAs)	0
Total	221	273	59	18	10		

WHAT'S CHANGED?

Criterion	NFSS Indicators	FSS Indicators	New Indicators	Revised Indicators	Dropped Indicators	Annexes	Guidance
1 Compliance with laws	24	24	0	1	0	1 (revised)	0
2 Workers' rights and employment conditions	33	46	17	2	3	1 (adopted)	1 (new)
3 Indigenous Peoples' rights	16	17	1	3	0	0	0 (1 may be developed)
4 Community relations	22	21	1	0	2	0	1 (no change)
5 Benefits from the forest	16	15	2	1	3	0 (Annex C dropped)	0
6 Environmental values and impacts	34	38	4 (+ 1 new Criterion)*	3	0	0	1 (no change)
7 Management planning	14	14	0	2	0	1 (revised)	0
8 Monitoring and assessment	10	10	0	4	0	0 (Annex F dropped)	0
9 High conservation values	12	19	7	0	0	2 (1 revised and 1 new)	0
10 Implementation of management activities	38	69	31 (including 25 new HHP Indicators)	2	2	1	1 (10 HHP templates and guiding ESRAs)
Total	221	273	59	18	10		

WHAT'S CHANGED?

Criterion	NFSS Indicators	FSS Indicators	New Indicators	Revised Indicators	Dropped Indicators	Annexes	Guidance
1 Compliance with laws	24	24	0	1	0	1 (revised)	0
2 Workers' rights and employment conditions	33	46	17	2	3	1 (adopted)	1 (new)
3 Indigenous Peoples' rights	16	17	1	3	0	0	0 (1 may be developed)
4 Community relations	22	21	1	0	2	0	1 (no change)
5 Benefits from the forest	16	15	2	1	3	0 (Annex C dropped)	0
6 Environmental values and impacts	34	38	4 (+ 1 new Criterion)*	3	0	0	1 (no change)
7 Management planning	14	14	0	2	0	1 (revised)	0
8 Monitoring and assessment	10	10	0	4	0	0 (Annex F dropped)	0
9 High conservation values	12	19	7	0	0	2 (1 revised and 1 new)	0
10 Implementation of management activities	38	69	31 (including 25 new HHP Indicators)	2	2	1	1 (10 HHP templates and guiding ESRAs)
Total	221	273	59	18	10		

Non-timber forest products (NTFPs)



“All products other than timber derived from the Management Unit “

1 Plants and parts of plants



2 Tannin



3 Essential oils



4 Medicinal plants and product



5 Pharmaceutical raw materials



6 Mushrooms and truffles



7 Native pepper berries, nuts, fruit and seeds



8 Game (from introduced species only)



9 Bee products



Principle 2

Workers' rights and employment conditions



Training that raises awareness and educates about Australia's history through a First Nation's lens, hereby encouraging critical reflection on the legacy of colonisation, including the policies, structures and systems that have led to the detrimental gaps between Indigenous and non-Indigenous Australians socially, politically, culturally and economically.

Principle 3

Indigenous Peoples' Rights



Indigenous Cultural Landscape definition

Indigenous Cultural Landscape (ICL)

Indigenous Cultural Landscapes: Indigenous cultural landscapes are living landscapes to which First Nations Peoples attribute environmental, social, cultural and economic value because of their enduring relationship with the land, water, fauna, flora and spirits and their present and future importance to their cultural identity. An Indigenous Cultural Landscape is characterised by features that have been maintained through long-term interactions based on land-care knowledge, and adaptive livelihood practices. They are landscapes over which First Nations Peoples exercise responsibility for stewardship.

Principle 3

Indigenous Peoples' Rights



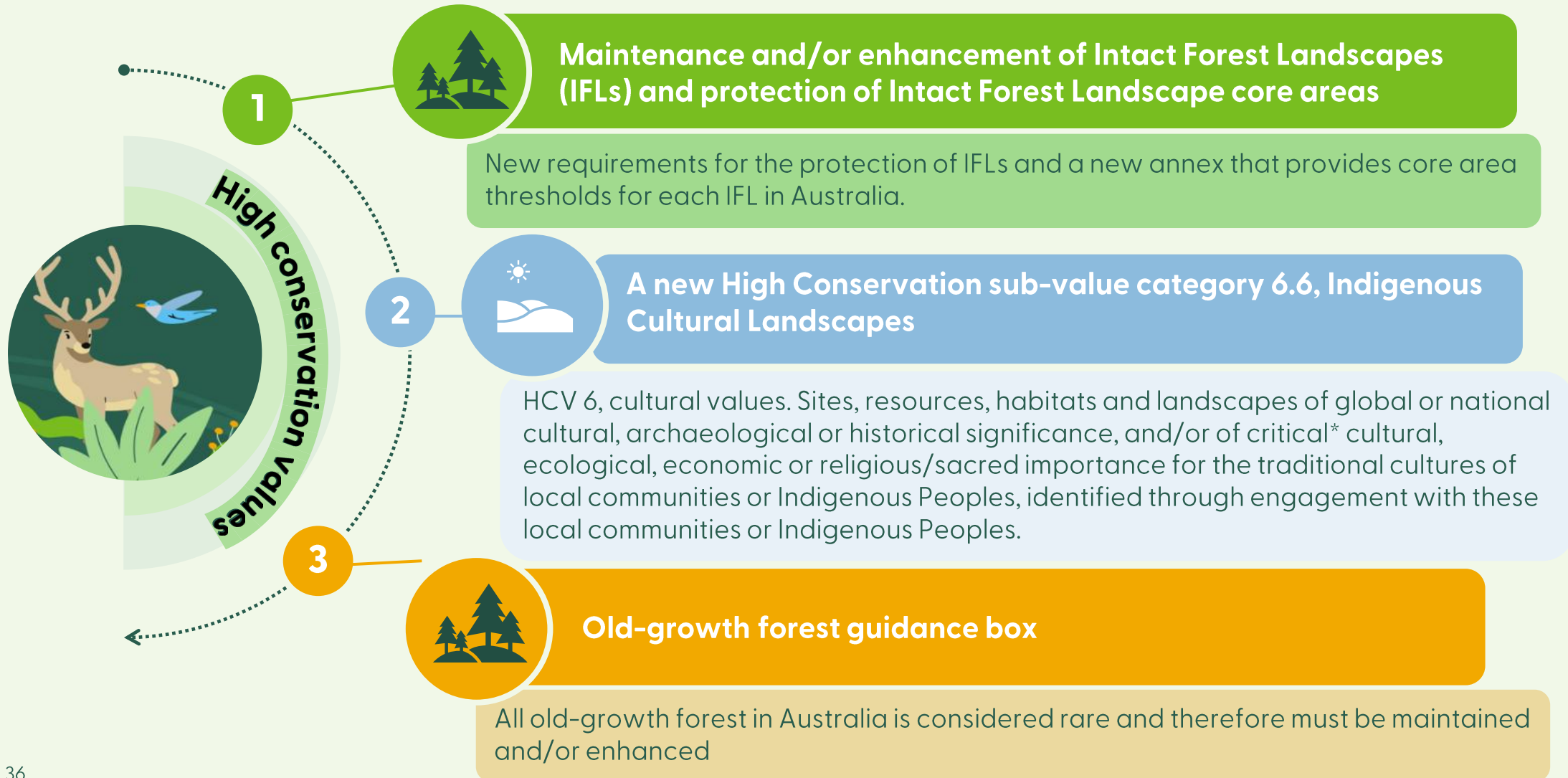
Principle 6

Environmental values and impacts



Principle 9

High conservation values



POLL

Are you still awake?

Yes: 👍 😴

No:

Principle 10

Implementation of management activities



Highly Hazardous Pesticides (HHPs) used by Australian growers

- | | | | | |
|--|--|--|---|--|
| 1 2,4-D
(restricted)
 | 2 1080 (sodium
fluoroacetate)
(restricted)
 | 3 Alpha-
cypermethrin
(restricted)
 | 4 Amitrole
(restricted)
 | 5 Atrazine
(restricted)
 |
| 6 Copper
oxychloride
(restricted)
 | 7 Fipronil
(restricted)
 | 8 Glufosinate
ammonium
(restricted)
 | 9 Glyphosate
(restricted)
 | 10 Picloram
(restricted)
 |

FSC highly restricted HHPs: chemical pesticide presenting two or three out of the following hazards: acute toxicity, chronic toxicity and environmental toxicity.

FSC restricted HHPs: chemical pesticide presenting one out of three of the following hazards: acute toxicity, chronic toxicity and environmental toxicity.

HHP indicators - examples

Reduction

Indicator 10.7.10

A trend of replacement, reduction and/or removal of highly hazardous pesticides over time is demonstrated, or continued use is justified. (Applicable to all HHPs)

1080

Indicator 10.7.15

Gloves and eye protection are used when loading ejectors with sodium fluoroacetate capsules. (Applicable to sodium fluoroacetate)

Protection

IGI

Risk mitigation measures for workers* include the use of appropriate personal protective equipment consistent with FSC-POL-30-001b Personal Protective Equipment.

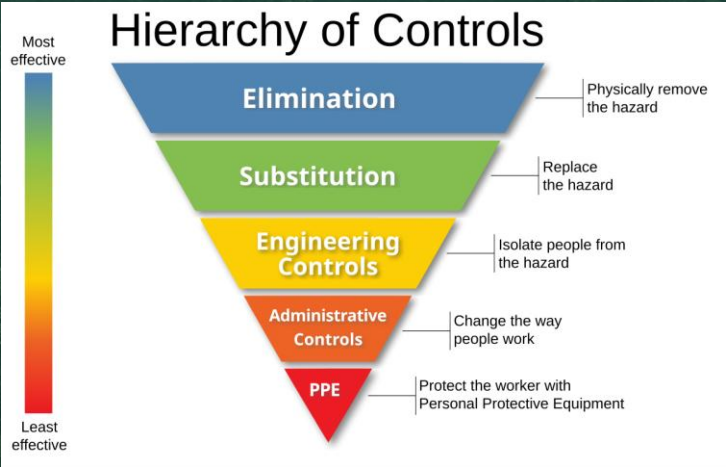
Protection

Indicator 10.7.4

Where the risk of exposure* of workers* to highly hazardous pesticides* cannot be otherwise controlled (e.g. through engineering substitution and administrative controls), risk mitigation measures include the use of:

Appropriate personal protective equipment consistent with relevant national, state and territory laws; and

Appropriate personal protective equipment consistent with FSC-POL-30-001b *Personal Protective Equipment* where the highly hazardous pesticide* is used as a concentrate (applicable to all HHPs)





Thematic revision priorities

Priority issue #1

Significant disturbance events



Priority issue #2

Climate change



P6 – One minor indication
Environmental values include carbon sequestration and storage

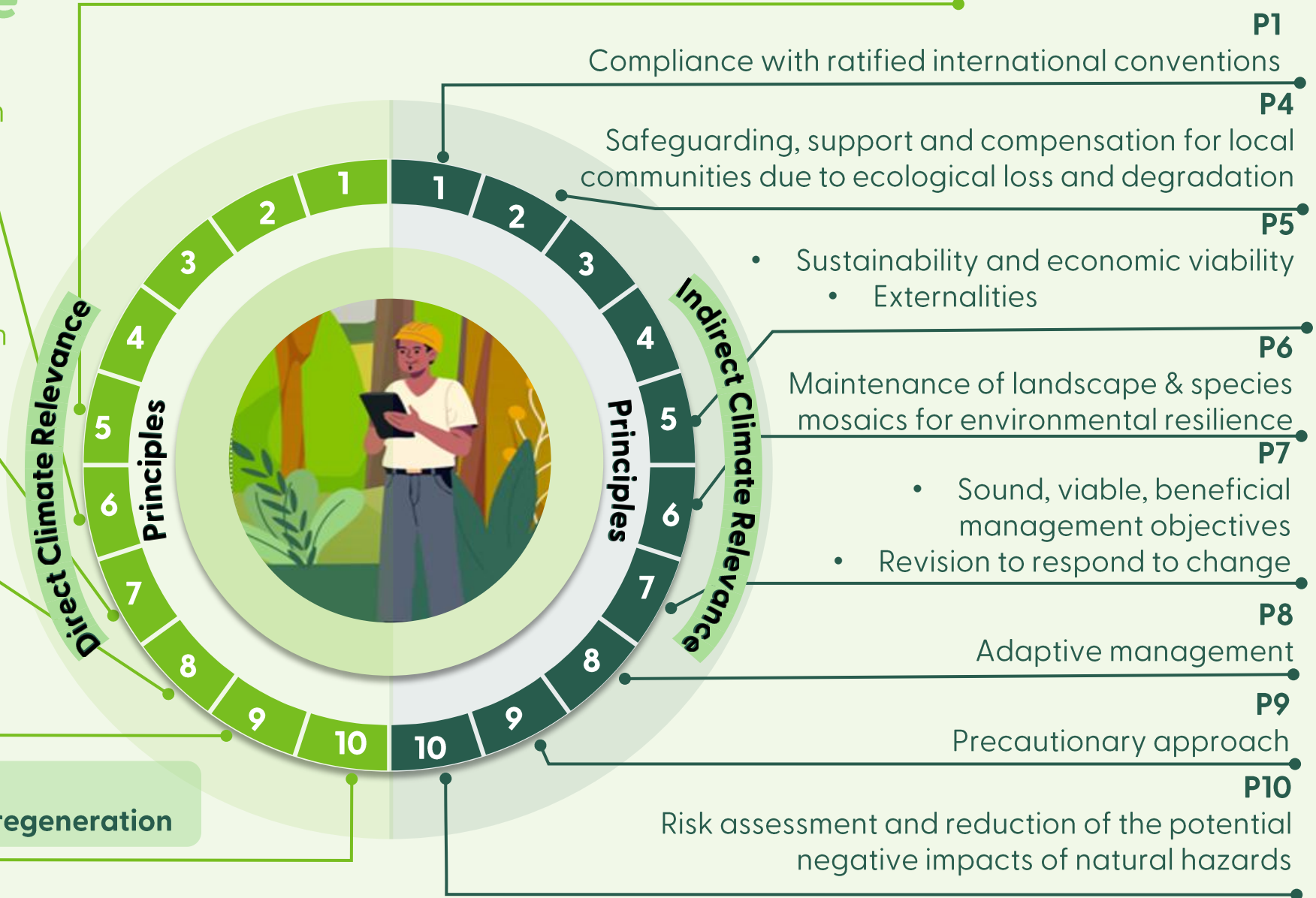
P7 – One minor indication
Verifiable targets include soil carbon

P8 – One minor indication
Monitoring of soil carbon

P9 – Definition-wise indication
Climate refugia (HCV3)
Climate regulation (HCV 4)

P10
Flexibility to use “other species” for regeneration

P5 – One specific requirement indication
Harvest levels based on impact from climate change, pests diseases and natural hazards



Poll

**Do you think additional
requirements should be added
regarding climate change?**

Yes: 👍

No: 😬



The process going forward

TIMELINE



PUBLIC CONSULTATION OF V1.0

1 July – 31 August

Webinars on 29 July and 1 August



PUBLIC CONSULTATION AND FOREST TESTING OF V2.0



February – April 2026

Public consultation and concurrent forest testing



APPROVAL AND PUBLICATION

July 2026 – ?

Approval by the FSC ANZ BoD, submission to and approval by FSCI, and publication



DEVELOP DRAFT V2.0

September – February

Analysis of consultation feedback and drafting of V2.0



DEVELOP DRAFT V2.1

April to July 2026

Analysis of consultation feedback and drafting of V2.1

Stay informed: Revision process page and newsletter



Have your say

<https://consultation-platform.fsc.org/>

Deadline: 31 August



Q & A

Thank you

Stefan Jensen
s.jensen@au.fsc.org
0407 606 633



Forest Stewardship Council®
Australia and New Zealand



552 Victoria Street
North Melbourne, 2051, VIC
info@au.fsc.org
All rights reserved
FSC® F000201

www.anz.fsc.org