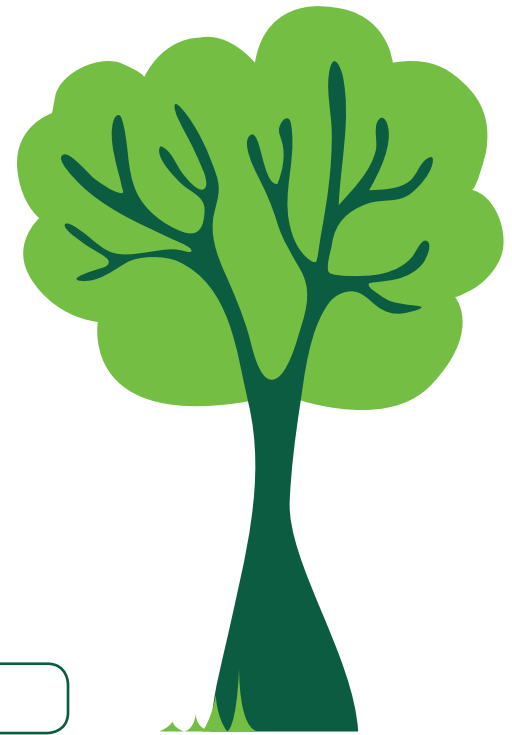


# WHAT IS FSC®?

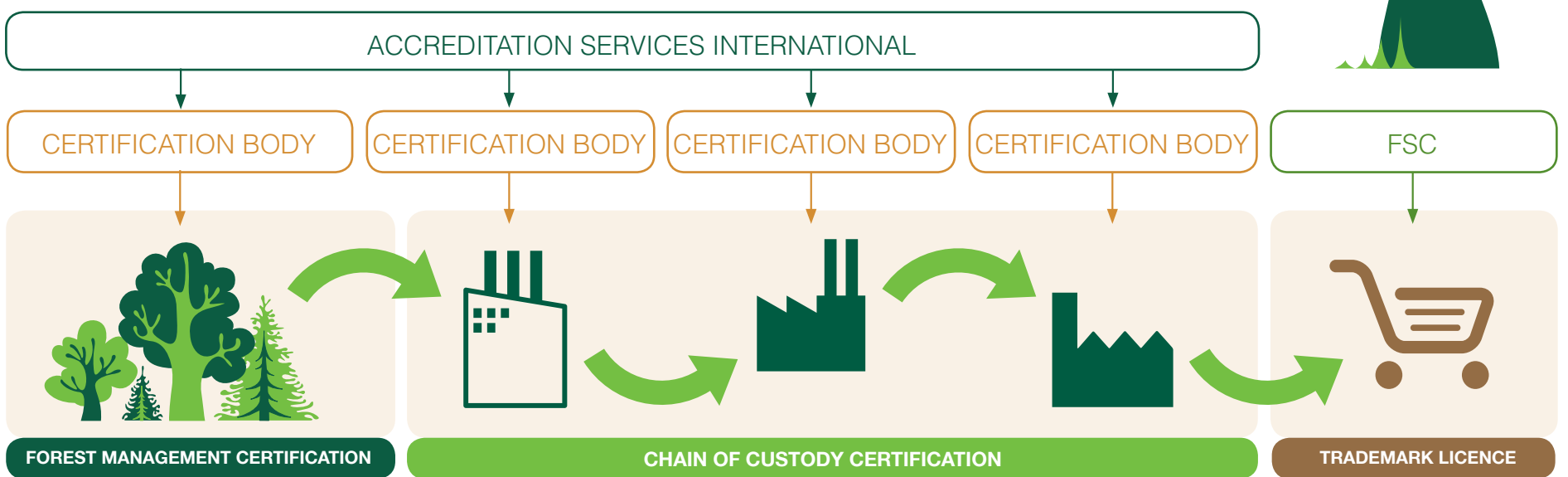


The Forest Stewardship Council (FSC) is an international certification and labelling system dedicated to promoting environmentally appropriate, socially beneficial, and economically prosperous management of the world's forests. FSC was created in 1993 to help consumers and business identify products from responsibly managed forests. FSC has developed a system of forest certification and product labelling that enables people to identify responsibly sourced wood, paper and other forest products.

# HOW DOES THE FSC SYSTEM WORK?



FSC runs a global forest certification system with two key components: Forest Management and Chain of Custody. The certification process is carried out by independent organizations called certification bodies, which assess forest managers and forest product companies against FSC standards. FSC certification allows companies to label their FSC products which then enables consumers to choose products that support responsible forest management.



# FSC HELPS TO:



Image credits: © FSC IC; © FSC Canada

# WHAT DO THE LABELS MEAN?

The FSC label on a wood or paper product is your assurance that it is made with, or contains, fibre that comes from a FSC-certified forest or from post-consumer waste. FSC labels can also be found on non-timber forest products.



**FSC 100%**  
Products Made from 100% virgin fibre from FSC certified forests.



**FSC MIX**  
Products made from FSC-certified virgin fibre and/or recycled fibre mixed with controlled fibre.



**FSC Recycled**  
Products made from 100% recycled fibre.

# HOW CAN I HELP?

Choose FSC-certified products whenever you can. Look for the FSC labels on paper, wood and other forest products.

